

PLANTING NEAR DISTRIBUTION POWER LINE RIGHTS-OF-WAY

- I. Trees conduct electricity and can cause:
 - A. Safety issues resulting in injury or death; and
 - B. System reliability problems and outages (localized and/or broad-scale).
- II. For public safety and electric service reliability, Florida law requires utilities to trim and/or remove trees near certain power lines.
- III. Primary lines are high voltage lines. They are usually along the street, in an alley, or on private property where an easement has been acquired. Primary lines may be located in other places as well. Please follow these rules for planting near primary lines:
 - A. Up to 15 feet away from the primary lines (see Page 3), plant only shrubs and flowers that are small at maturity (*i.e.* less than 3 feet tall). Also, remove naturally seeded trees from this area.
 - B. Between 15 and 20 feet away from primary lines (see Page 3), plant only trees that will not exceed 25 feet in height at maturity. Select from the list on Page 3. Remove naturally seeded trees from this area.
 - C. Between 20 and 50 feet away from primary lines (see Page 3), plant only trees that will not exceed 40 feet in height at maturity. Select from the list on Page 3. Remove naturally seeded trees from this area.
 - D. Further than 50 feet from the lines, you may plant trees that will grow to a height of more than 40 feet at maturity (See Page 3). Select from the list on Page 3.
- IV. Triplex, Secondary, and Service lines usually run from a pole to your house or business. Please follow these rules for planting near these types of lines:
 - A. Trees should not be planted under or within four feet of these lines, and remove any naturally seeded trees from this area.
 - B. More than four feet away from these lines, any species of tree may be planted. Please be advised, however, that trees and other plants may interfere with the lines running from the pole to your house or business. A falling tree or limb can cause disruption of the service to your house or business.
- V. Allow Gulf Power Company to keep poles and guy wires clear of shrubbery, vines and tree limbs so that Gulf Power Company's facilities can be safely climbed and/or inspected by Gulf Power Company's crews.
- VI. Planting Near Underground Utilities – Please follow these rules:
 - A. Around pad-mounted transformers, leave a 10-foot space free of shrubs or trees on the sides and back. Leave the front without shrubs so that the transformer can be seen by crews from the street and it can be safely opened. The front side of the pad-mounted transformer should remain clear of vegetation other than maintained low-growing grass out to 10 feet.
 - B. You may plant trees, which at maturity will be small or medium size, at least 10 feet from underground utilities. This is to minimize root damage to sidewalks, powerlines, and water and sewer lines. **IMPORTANT: Call 811 before you dig! If you do not know the precise location of the underground utilities, call 811.**

- C. You may plant trees with large mature sizes at least 20 feet from underground utilities and sidewalks.
IMPORTANT: Call 811 before you dig! If you do not know the precise location of the underground utilities, call 811.

For more information, contact Gulf Power Company at 1-800-225-5797 and ask to speak to your local Utility Arborist.



Get underground utilities marked for free!

Planning a home improvement job? Planting a tree? Installing a fence or deck? Here's what you need to know first: Whether you are planning to do it yourself or hire a professional, smart digging means calling 811 before each job.

Homeowners often make risky assumptions about whether or not they should get their utility lines marked, but every digging job requires a call — even small projects like planting trees and shrubs. The depth of utility lines varies and there may be multiple utility lines in a common area.

Digging without calling can disrupt service to an entire neighborhood, harm you and those around you and potentially result in fines and repair costs. Calling 811 before every digging job gets your underground utility lines marked for free and helps prevent undesired consequences.

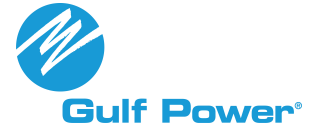


Here's how it works

Call 811 from anywhere in the country a few days prior to digging, and your call will be routed to your local One Call Center. Tell the operator where you're planning to dig, what type of work you will be doing and your affected local utilities

companies will be notified about your intent to dig. In a few days, they'll send a locator to mark the approximate location of your underground lines, pipes and cables, so you'll know what's below — and be able to dig safely.

**Always call 811 before you start any digging project.
You may avoid injury, expense and what could be a
very inconvenient day.**



TREE SPECIES RECOMMENDED FOR PLANTING NEAR DISTRIBUTION POWER LINE RIGHTS-OF-WAY

UTILITY RIGHT-OF-WAY AREAS EXTENDING 15 FEET IN ANY DIRECTION FROM THE UTILITY POLE AND/OR THE POWER LINES: Plant only low-growing grass varieties with a maximum height at maturity of up to 3 feet.

LOW ZONE AREAS BETWEEN 15 TO 20 FEET FROM PRIMARY LINES: Use only plant species with a maximum height at maturity of up to 25 feet.

Examples:

Loquat	Sago Palm	Florida Yew	Winterberry
Fringe Tree	Florida Yew	Weeping Bottle Brush	Brazil Raintree
Wax Myrtle	Hawthorne	Burning Bush	Saw Palmetto
Hoptree	Russian Olive	Azalea	Yaupon Holly
Sweet Viburnum	Mock Orange	French Hydrangea	Ashe Magnolia
Mapleleaf Viburnum	Japanese Maple	Natal Plum	Flowering Crabtree
Pindo Palm	Savannah Holly	Buttonbush	

MEDIUM ZONE AREAS BETWEEN 20 TO 50 FEET FROM PRIMARY LINES: Use only plant species with a maximum height at maturity of up to 40 feet.

Examples:

Silverbells	Witchhazel	Glossy Privet
Dogwood	Crepe Myrtle	Filbert
Wax-leaf Ligustrum	Japanese Magnolia	
Redbud	Willow	

TALL ZONE MORE THAN 50 FEET FROM PRIMARY LINES: Plant species with mature height in excess of 40 feet are allowed.

Examples:

Oaks	Sycamore	Southern Magnolia
Pecan	Red Maple	Black Gum
Hickory	Silver Maple	Tulip Tree (Yellow Poplar)
Sweetgum	Sugar Maple	Tupelo
Cypress	Cottonwood	Elm
Basswood	Camphor	River Birch
Chinese Elm (Drake)	American Holly	Blackjack Oak
Bradford Pear	Cabbage Palm	American Hornbeam
Honeylocust	Japanese Cedar	Longleaf Pine
Southern Catalpa	American Persimmon	Loblolly Bay
Weeping Willow		

** The height information for each of these species listed here can be found at <http://www.floridata.com/plantlist/>.*

Gulf Power Company reserves the right to trim, remove, and/or maintain any vegetation within its legal right to do so. Abnormal or excessive growth of any species may warrant intervention by Gulf Power Company. Planting vegetation on transmission rights-of-way must be approved separately from this list. Please contact Gulf Power Company and ask that the right-of-way in question be properly identified for you prior to installing plants, shrubs, and/or trees. Ask your local Gulf Power Company Utility Arborist whether the line is for distribution or transmission. If in doubt, call Gulf Power Company!

CONSULT YOUR LOCAL NURSERY FOR ADDITIONAL SPECIES OF TREES THAT WILL MEET THESE HEIGHT REQUIREMENTS.



Making a
DIFFERENCE

TREES

Power Outages

Trees and branches that fall on or grow into power lines are one of the main causes of power outages in our area. So before you plant a tree, please take into account the size it will grow as it matures — and the location of overhead lines. Every year, customers plant trees too close to existing power lines. These can become a potential hazard to public safety and reliable electric service and must be trimmed.

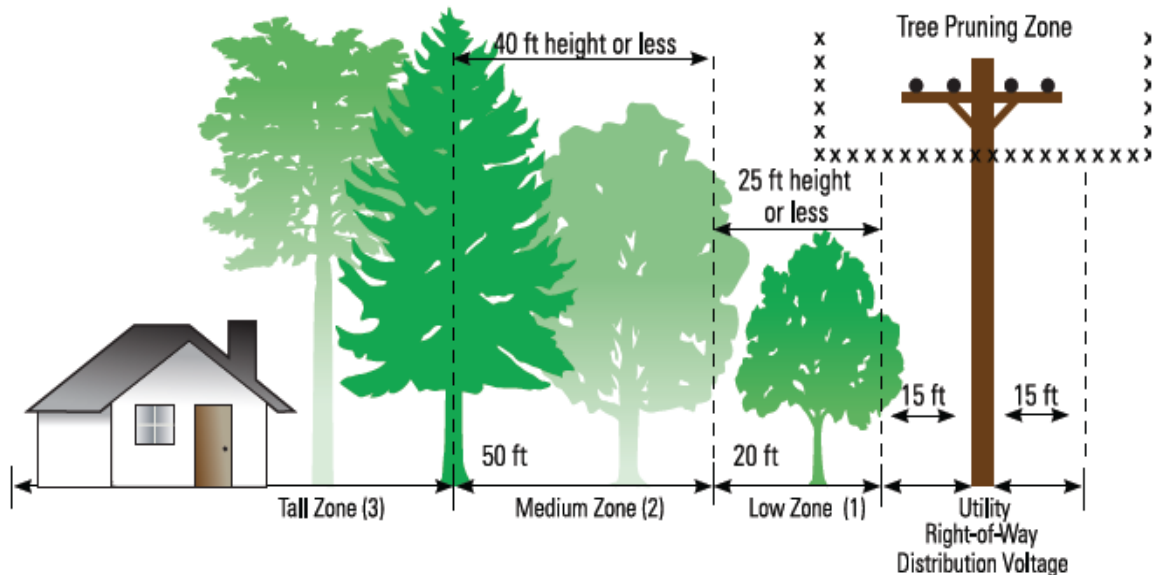
Gulf Power only trims trees near our primary lines going from pole to pole (in the right-of-way). We do not trim trees on your property from the pole to the house (called a service drop). If you need to trim the trees on your property, Gulf Power will come out and disconnect and reconnect your service for free. Call 1-800-225-5797 to set it up.

When planting, please follow these guidelines:

- Small trees (Low Zone) can be planted near power lines.
- Medium-sized trees (Medium Zone) should be planted 20 to 50 feet from power lines.
- Large trees (Tall Zone) should be planted more than 50 feet from power lines.

Safety

Tree limbs that are too close to power lines may become energized or may break and fall, bringing the power lines to the ground. If this occurs, stay away from the lines and call 911 immediately. For more information on trees that can be planted near power lines, please visit or contact your local nursery or the County Extension Service.



For all tree and vegetation concerns, please call Customer Service at 1-800-225-5797.



Gulf Power®